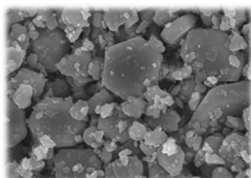


Motor Peripheral Materials

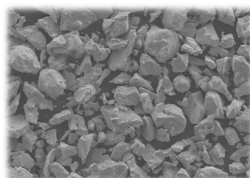
TODA KOGYO Group provides motor peripheral materials that meet various needs by magnetic material development technology, manufacturing technology and resin composite technology. In addition, we have established a global supply system to reduce supply risk.

Hard magnetic powder

Hard ferrite
[FEROTOP®]

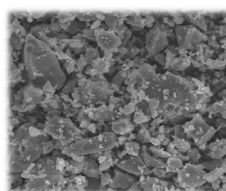


Nd-Fe-B

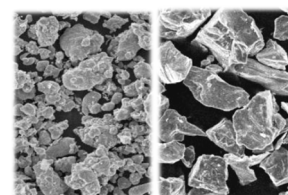


Soft magnetic powder

Soft ferrite
[FEROTOP™]



Soft magnetic metal



(Fe-Si-Cr, Fe-Si-Al系)

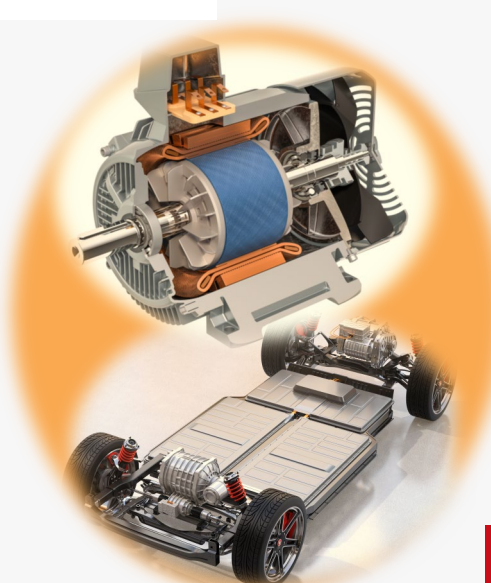
Hard magnetic compound

Hard magnetic resin compound
for injection molding



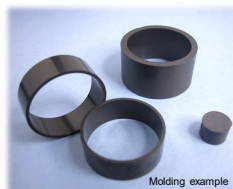
Soft magnetic compound

Soft magnetic resin compound
for injection molding



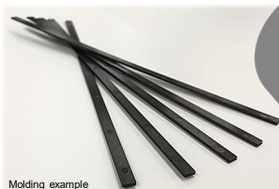
Molded product

Ring magnet for rotor

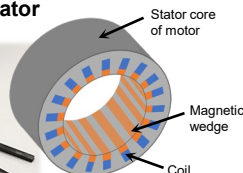


Molding example

Magnetic wedge for stator



Molding example



It is possible to improve the efficiency of the motor by controlling the magnetic flux flowing through the core.

Magnetic adhesive

Epoxy-based magnetic adhesive



Under development

